

Colline  
cat. Extra

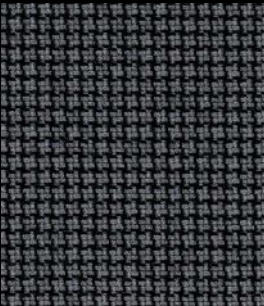
75% new wool worsted - 17% acrylic - 8% nylon  
Flame retardant - 100.000 Martindale



108



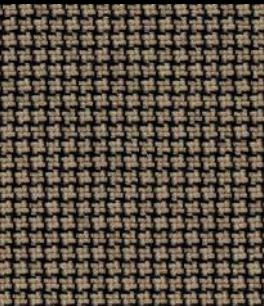
118



148



188



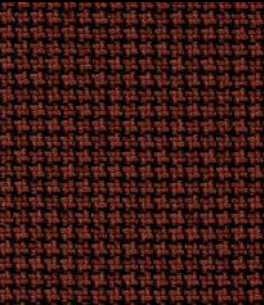
228



348



448



548



568



668



688



788

Technical details

Composition	75% new wool worsted - 17% acrylic - 8% nylon
Weight	Gr./ml. 650
Abrasion test	Martindale - ISO 12947-2: 100.000 rubs
Lightfastness	ISO 105-B02: 6
Pilling	ISO 12945-2: 4/5
Flame retardant	AS/NZS 1530.3 AS/NZS 3837 BS 5852 Crib 5 with treatment BS 5852 part 1 DIN 4102 B2 EN 1021-1/2 IMO FTP Code 2010 Part 8 NF D 60 013 UNI 9175 1IM US Cal. Bull. 117-2013
Environment	Natural fibres / Sustainable resource